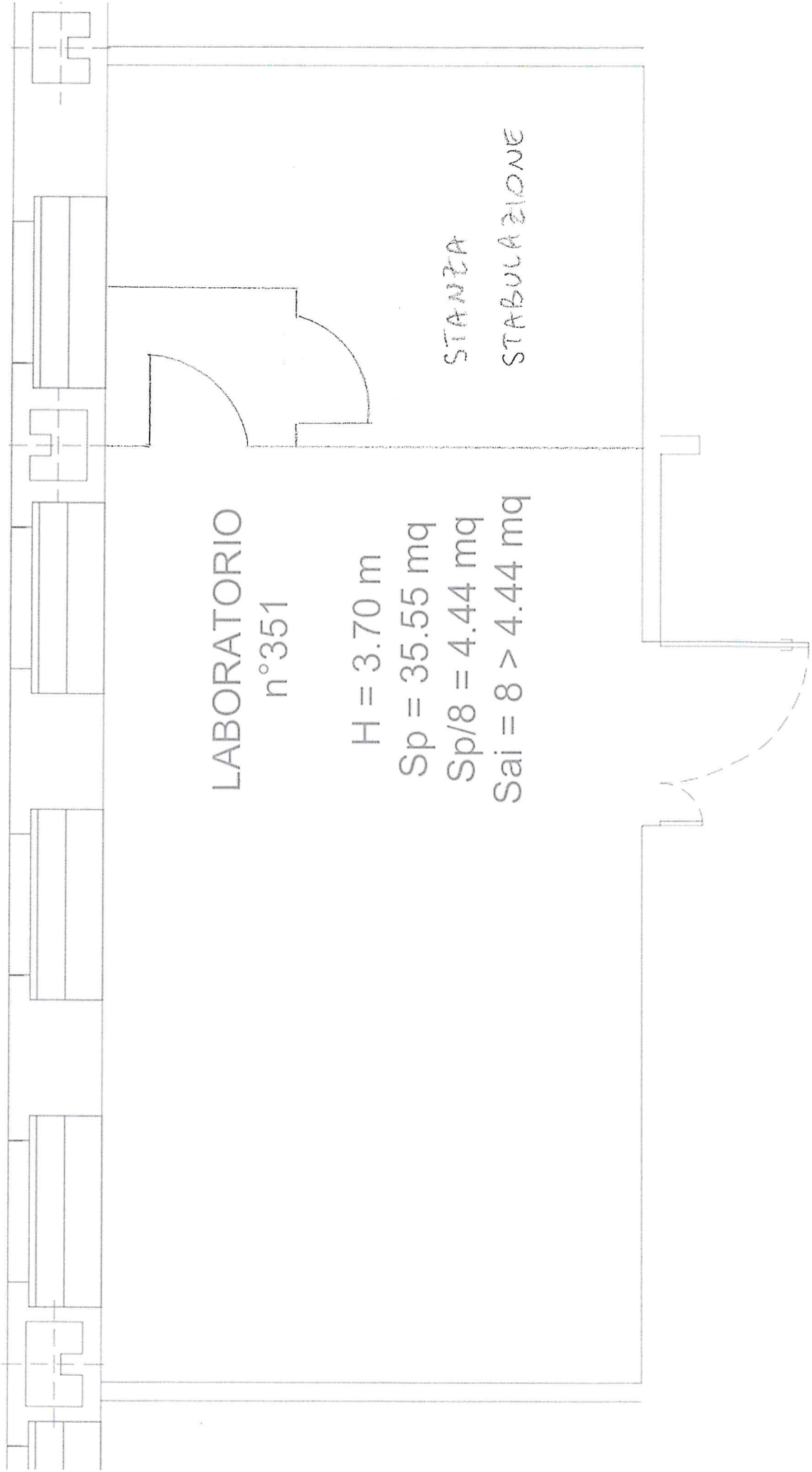


LABORATORIO
n° 463A



LABORATORIO
n°351

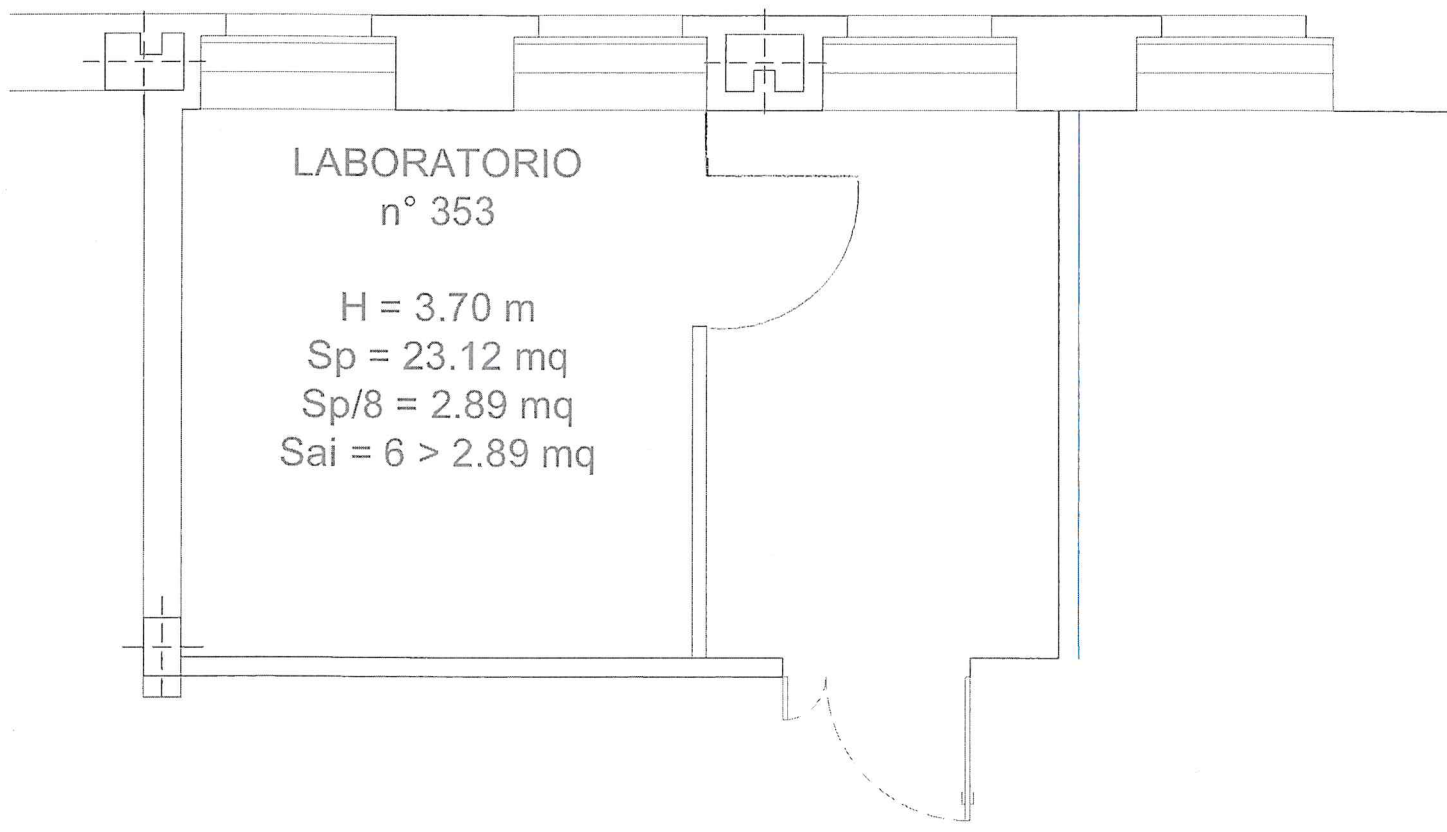
H = 3.70 m

Sp = 35.55 mq

Sp/8 = 4.44 mq

Sai = 8 > 4.44 mq

STANZA
STABILIZZAZIONE



LABORATORIO
n° 353

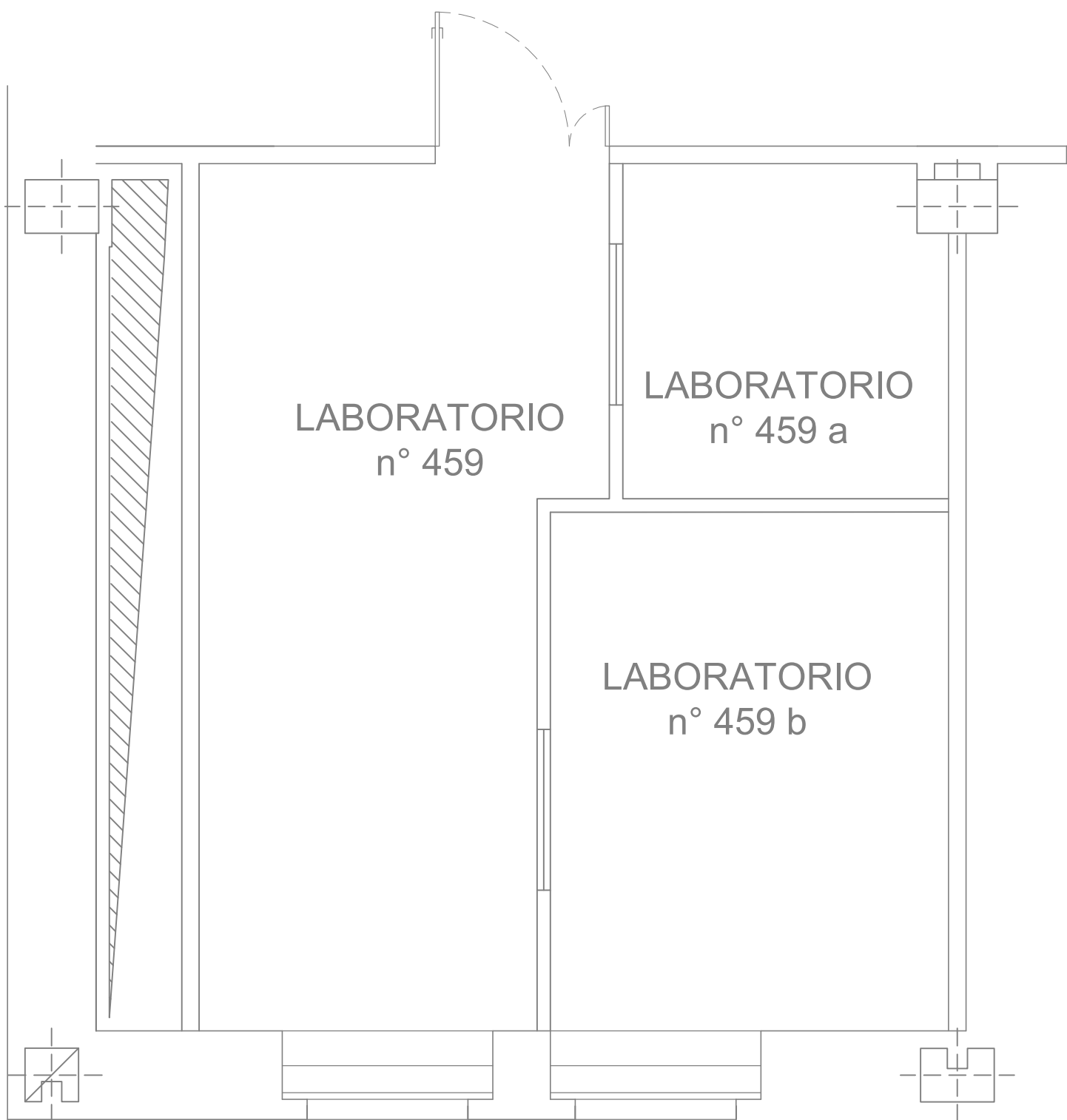
The diagram shows a floor plan of a laboratory. The main room is labeled 'LABORATORIO n° 353'. It features a semi-circular protrusion on the right side and a semi-circular indentation at the bottom right. The room is surrounded by a wall with several door openings. Technical specifications are listed on the left side of the room.

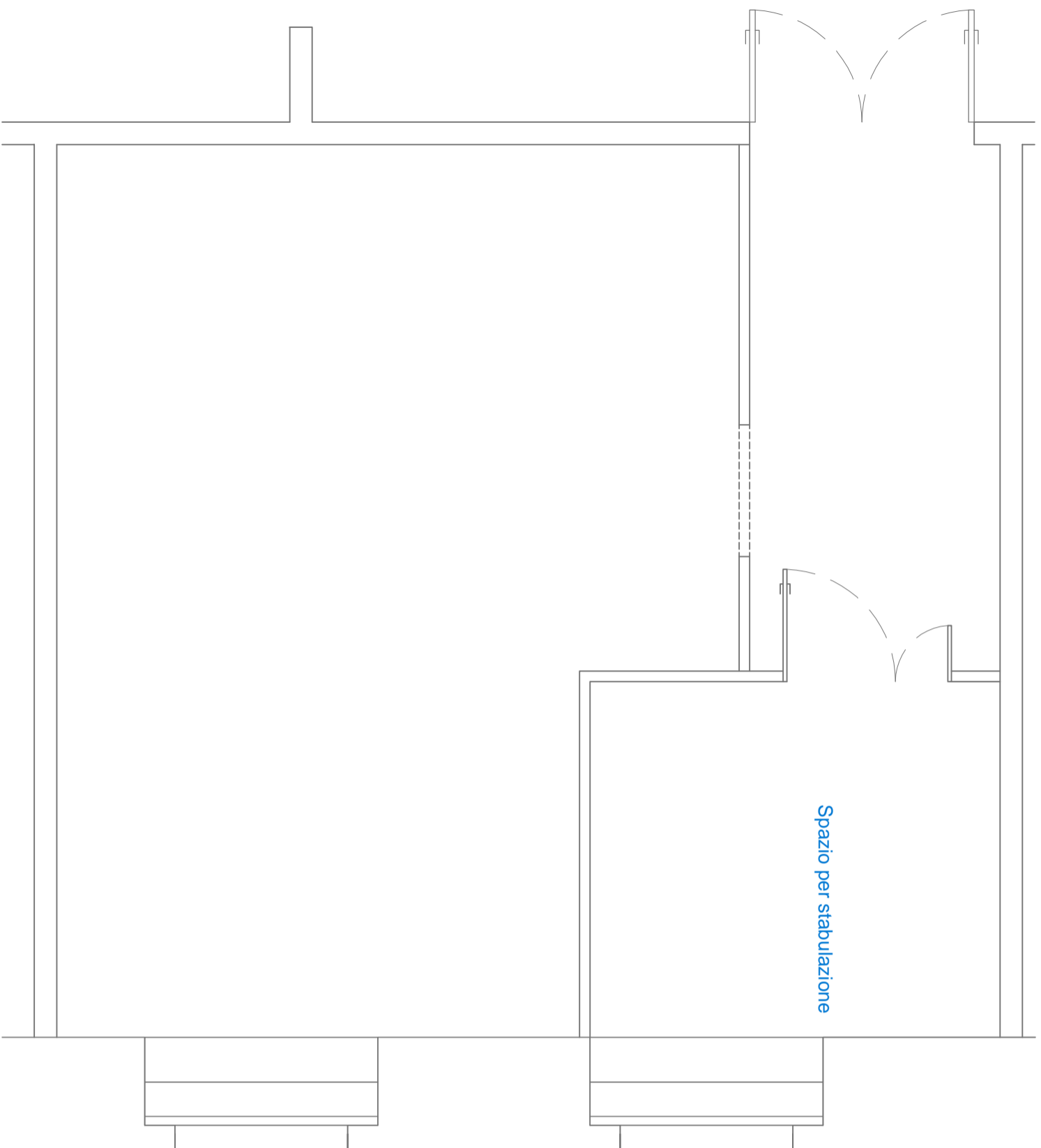
H = 3.70 m

Sp = 23.12 mq

Sp/8 = 2.89 mq

Sai = 6 > 2.89 mq





LABORATORIO 548

PIANTA PIANO QUINTO

Planimetria stabulario

